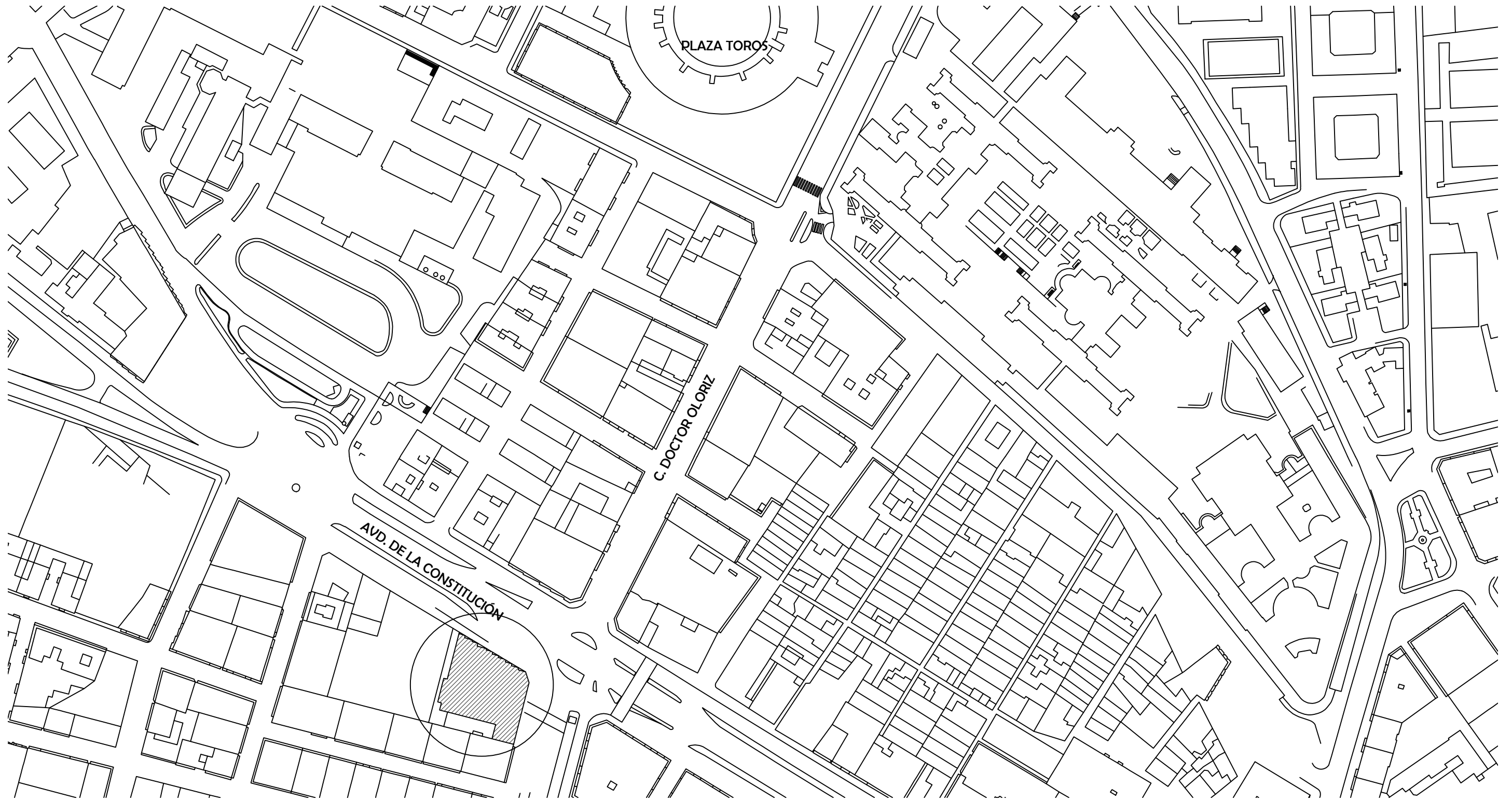
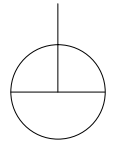


# PLANO DE SITUACIÓN

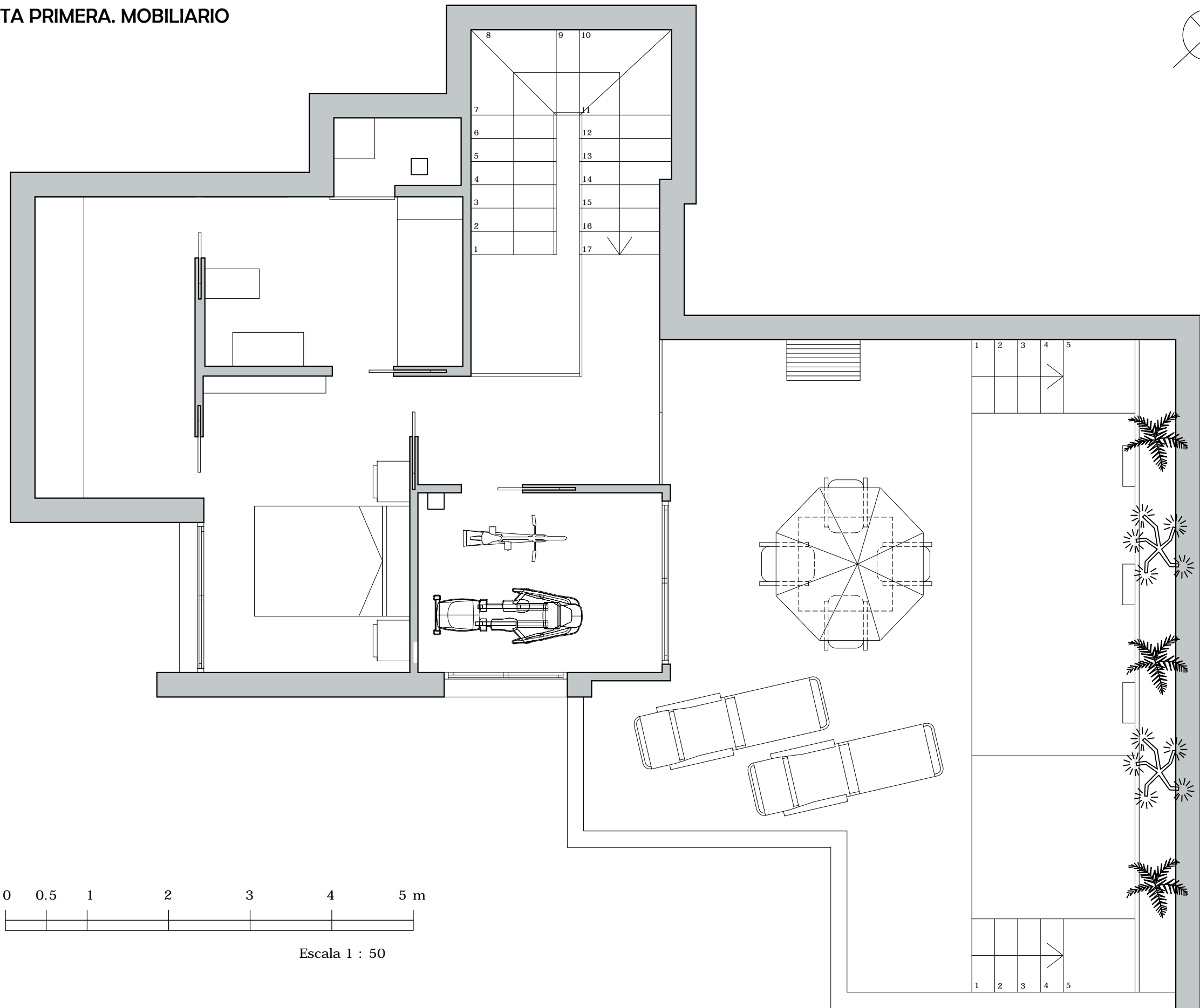


■ Situación Geométrica del Edificio:  $37^{\circ} 11.153280000000763'$  N  
 $3^{\circ} 36.527352000000279'$  W

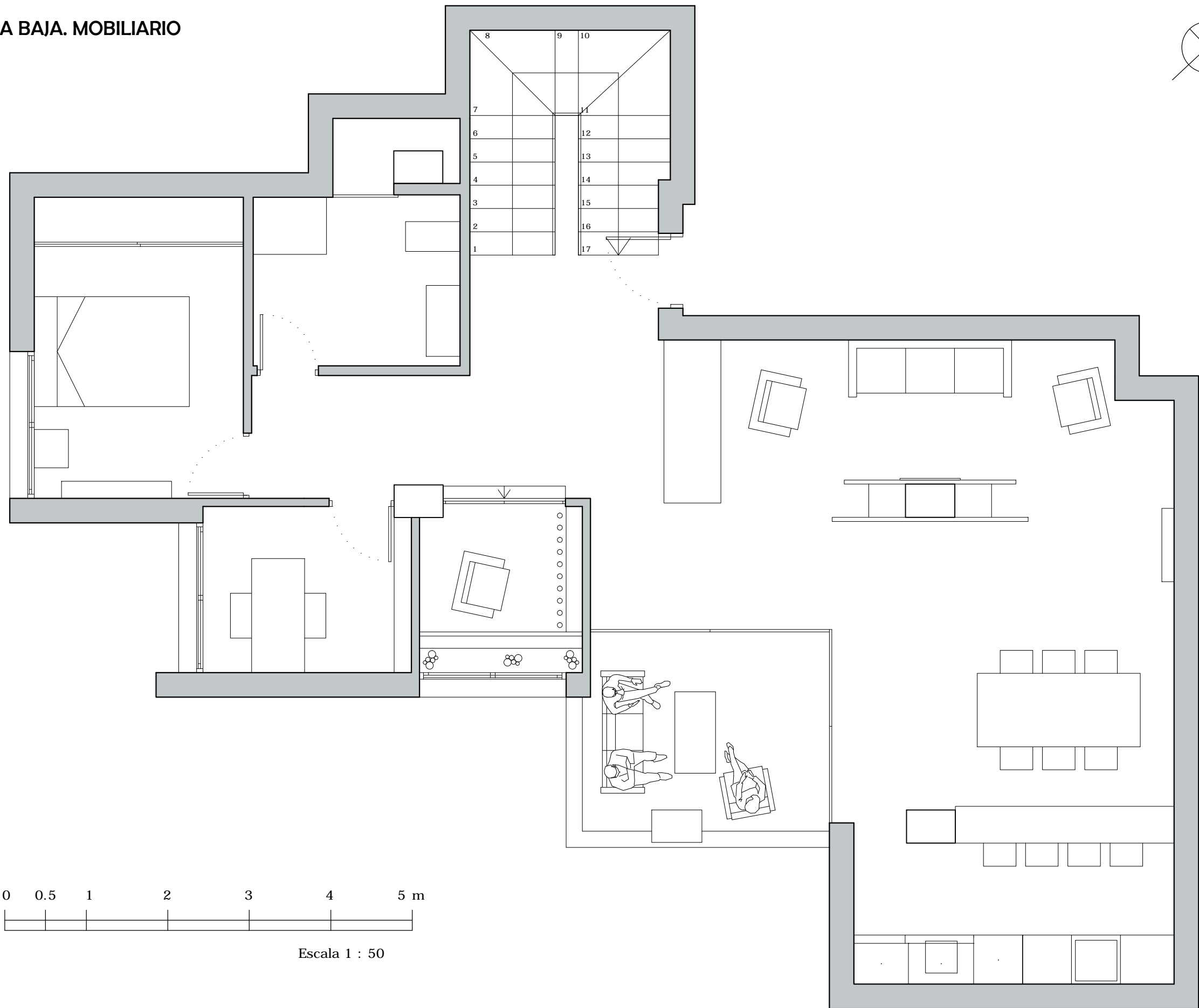
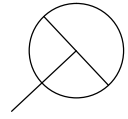
○ Ubicación de la Parcela

E: 1/2000

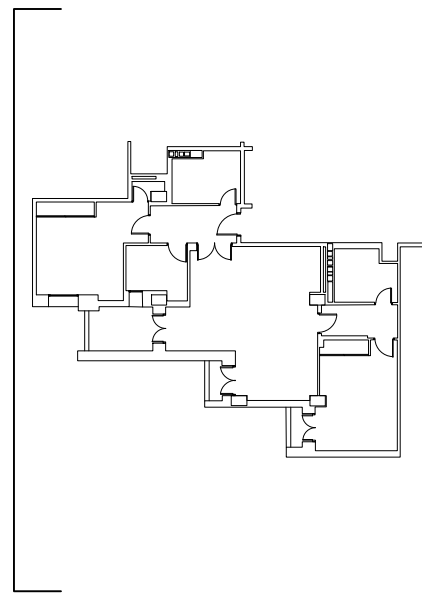
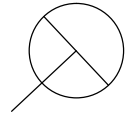
# REFORMADA PLANTA PRIMERA. MOBILIARIO



REFORMADA PLANTA BAJA. MOBILIARIO



# ALZADO ESTE ACTUAL

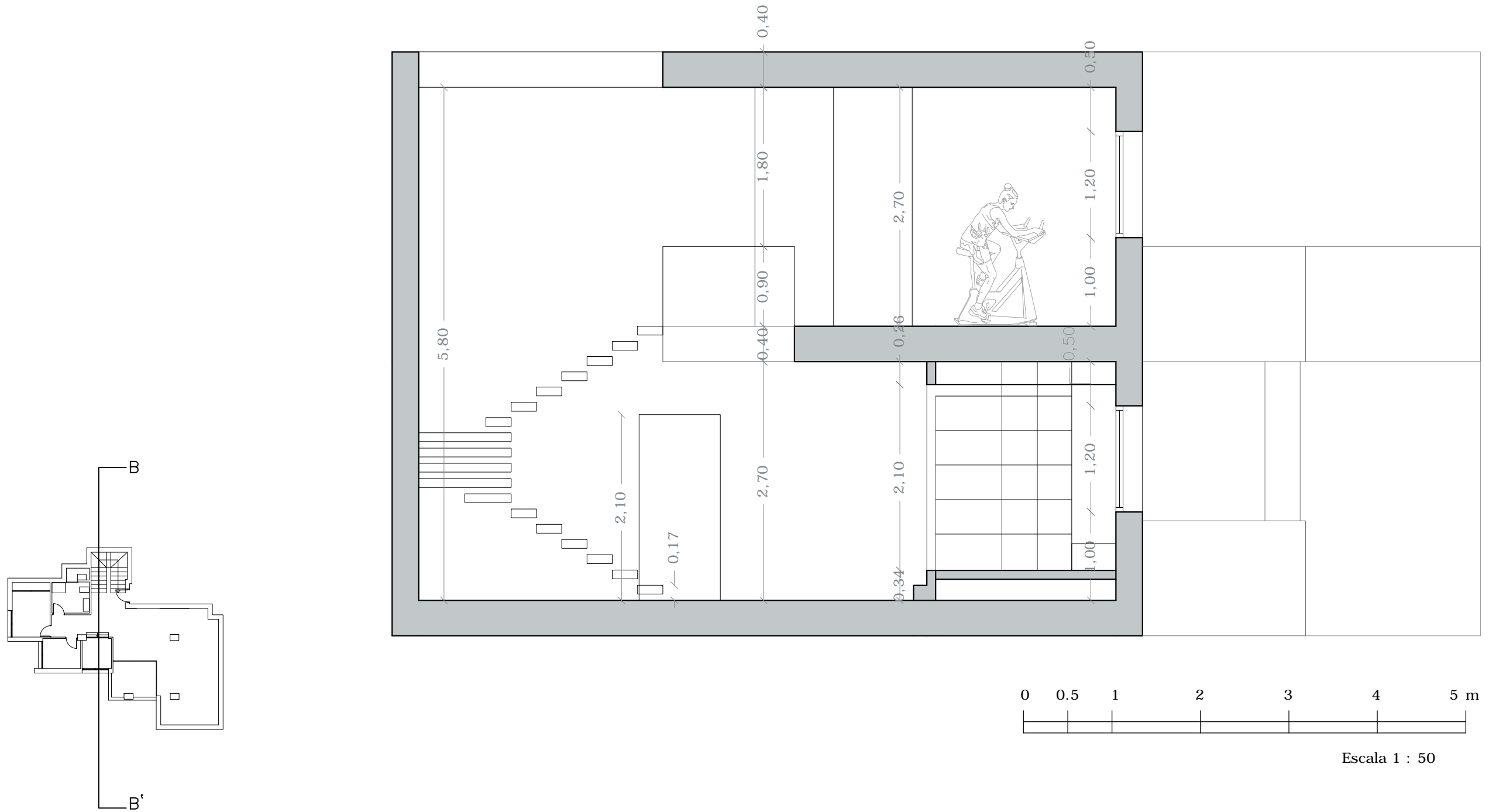
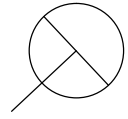


ALZADO AVENIDA DE ANDALUCES

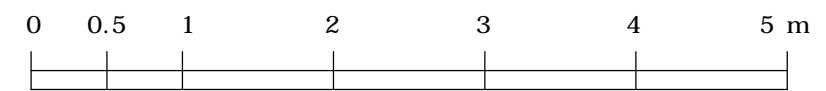
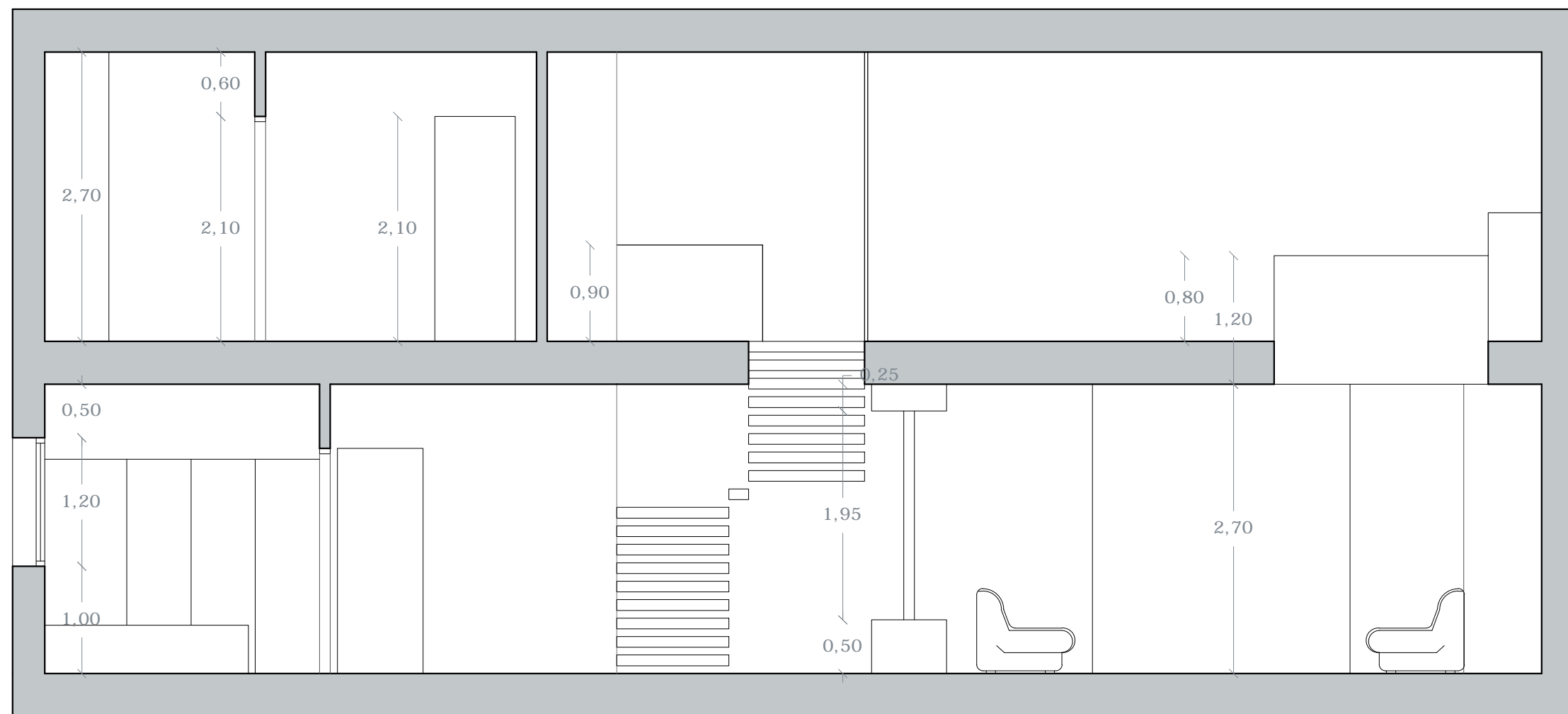
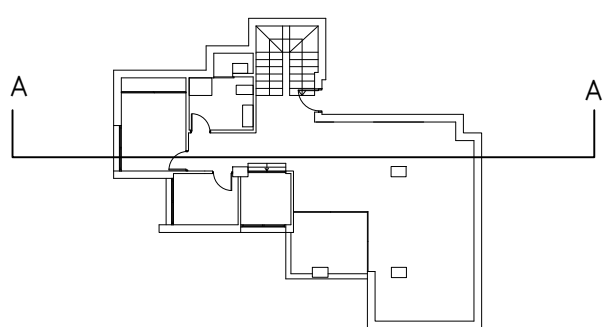
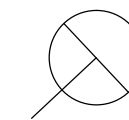


Escala 1 : 50

# SECCIÓN TRANSVERSAL



# SECCIÓN LONGITUDINAL



Escala 1 : 50